

# CUMULUS

## PENDANT

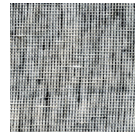
# Enoki

Designed in Australia by Enoki Pty Ltd © 2011  
t. 08 8271 5500 www.enoki.com.au

### Fabric



Black Voile



Pepper



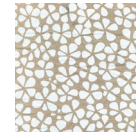
Muslin



Dove



Rice



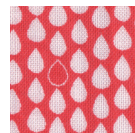
Perfect Circle



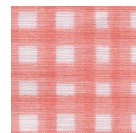
Elephant



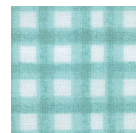
Grand Hearts  
Bosc Pear



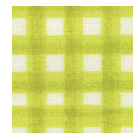
Raindrops



Gingham Shell



Gingham Sky



Gingham Grass



Speckle Shell



Speckle Sky



Speckle Grass



Floating Wild  
Grasses



Red



Hot Pink



Aqua



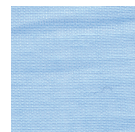
Citron



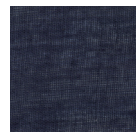
Yellow



Mint



Pale Blue



Navy



Pale Pink

### Timbers



Tasmanian Oak

### Flex



White



Red



Black



Grey

### Pendant

Cumulus Pendant 460  
Cumulus Pendant 660  
Cumulus Pendant 860

#### Concept Design

Vi Nguyen for Enoki

#### Product Development

Vi Nguyen, Susanna Bilardo  
and Danielle Duvoisin

### Details

#### Sizes

- 460mm diameter (460)  
550mm height
- 660mm diameter (660)  
780mm height
- 860mm diameter (860)  
1015mm height

### Globes

#### Recommended (USA) Bulb

- G30 14 Watt 120V Warm  
White Compact Fluorescent
- 75 Watt Incandescent  
Equivalent
- Maximum 100 Watt
- Medium Base Bulb
- Bulb not included

#### Recommended (AU) Globe

- 18W WW E27 220-240V  
GL 1CC
- 18 Watt Warm White  
Ambiance Globe
- 100 Watt Incandescent  
Equivalent
- Maximum 100 Watt
- Globe 110mm (GL110)
- Globe not included

### Notes

- Some prints are from boutique fabric houses. Consult your nearest stockist for current prints. Swatches not to scale.
- Grey flex comes with all pendants, unless otherwise requested.
- Shade care - dry clean only
- We recommend that the assembled Cumulus Pendant be installed by a licensed electrician.